



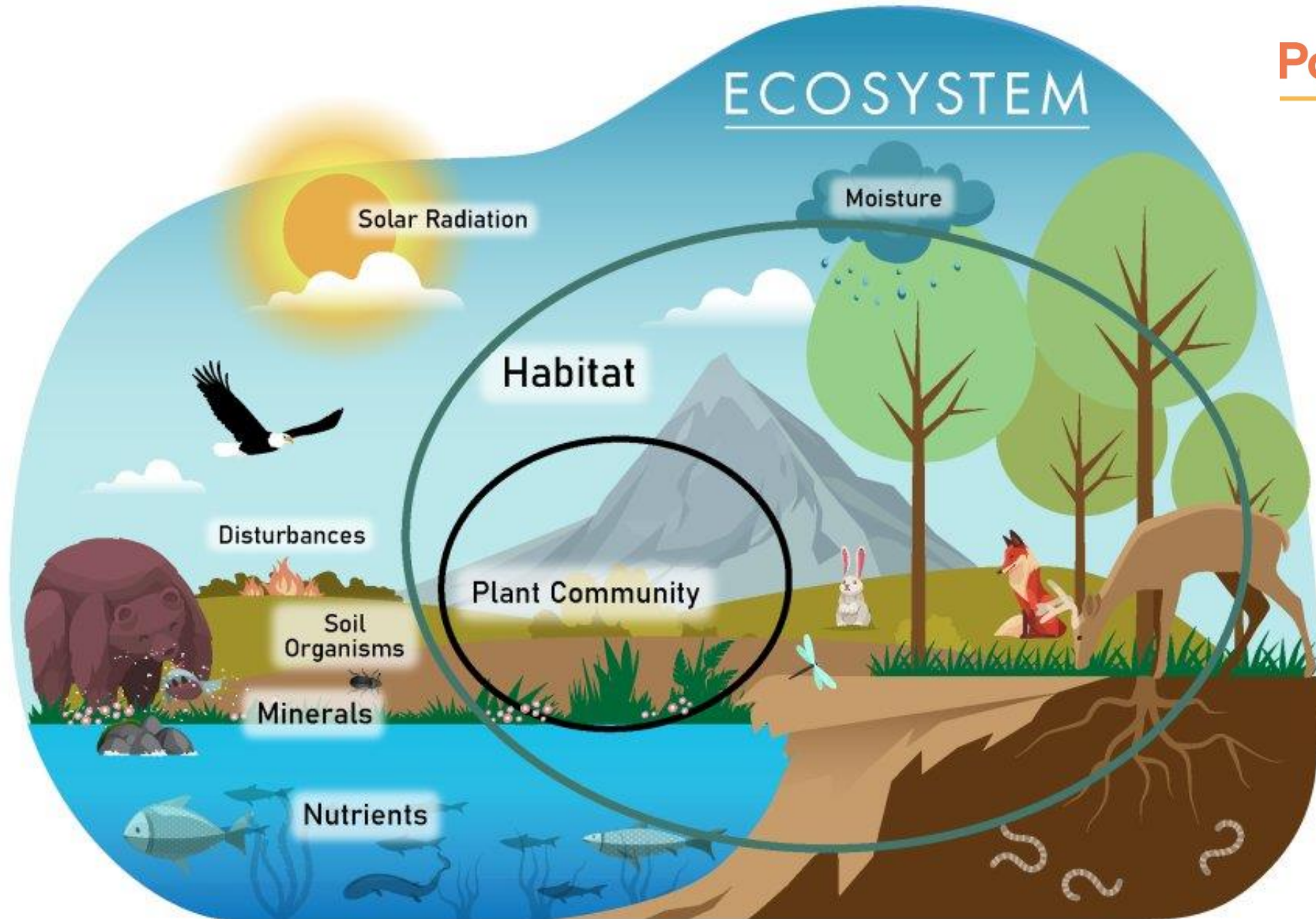
Becoming a Parent-Infant Team; the developmental stages of teams

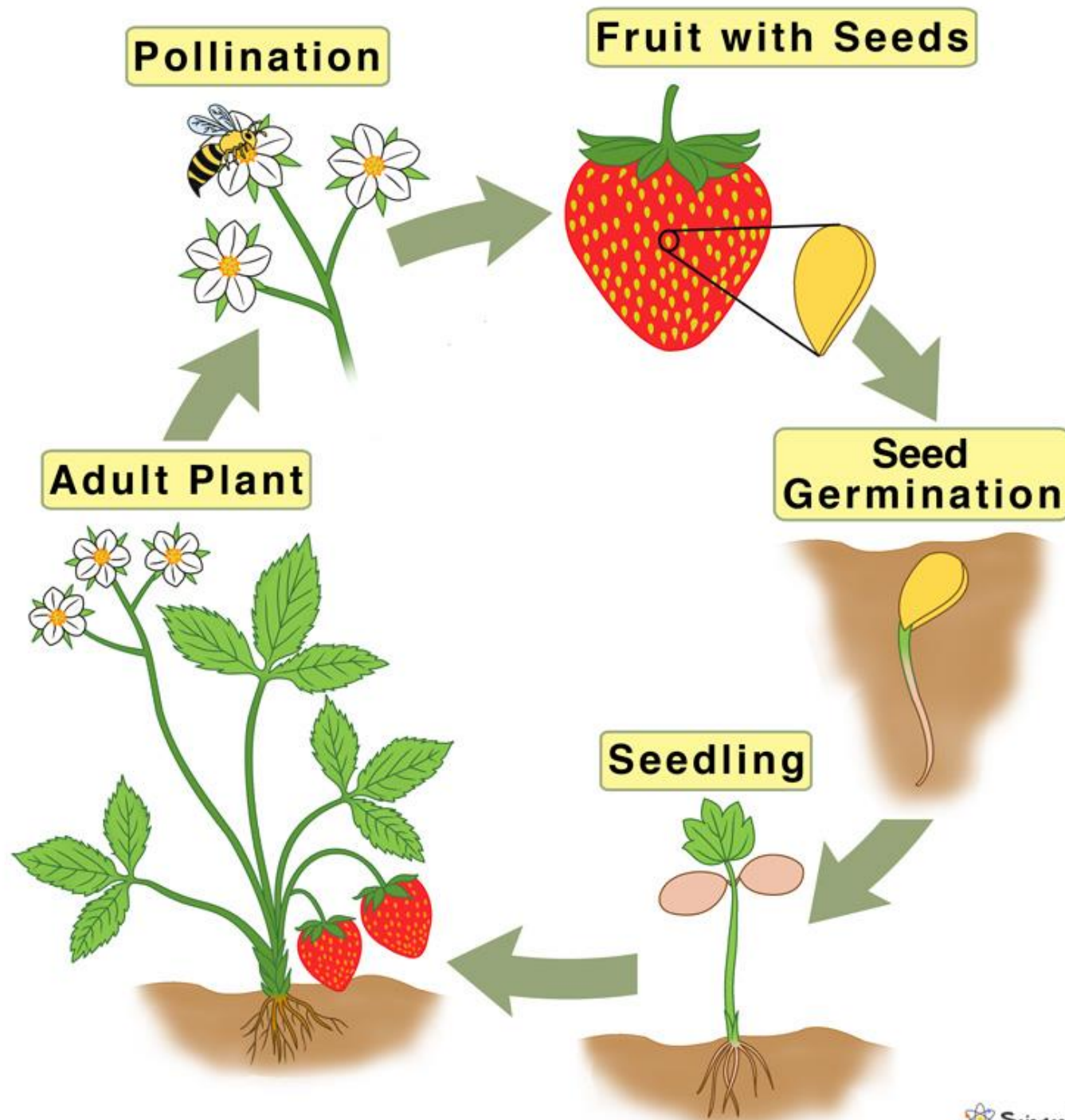
Wook Hamilton (Head of Development)

Dr Ben Yeo (Clinical Advisor)

Developmental Stages of Parent-Infant Teams










Parent-Infant
FOUNDATION



Parent-Infant Foundation



The Team and Partners

Clinical Associates



Developmental stages of a Parent-Infant Team



1. **Seed** (a vision for a Parent-Infant Team)
2. **Sapling/Young Plant** (emerging Parent-Infant Team or Service)
3. **Mature Plant** (Parent-Infant Team that meets our full definition)

[Definition of a
Parent-Infant Team](#)



Developmental stages of a Parent-Infant Team



1. **Seed** (a vision for a Parent-Infant Team)

Preparing the ground

- Service mapping
- Needs assessment
- Service specification
- Commissioning toolkit

[Service Development Tools](#)



Developmental stages of a Parent-Infant Team



2. Sapling/Young Plant (emerging Parent-Infant Team or service)

Establishing a team/service

- Growing pathways/partnerships
- Team processes
- Monitoring and reporting
- Development toolkit

[PAIR Pathway
Template](#)



Developmental stages of a Parent-Infant Team



3. **Mature Plant** (Parent-Infant Team that meets our full definition)

- Sustainability
- Shaping the wider system (reaching most vulnerable)
- Establishing new pathways and partnerships

[Definition of a Parent-Infant Team](#)

Fourth Category

- Commissioners
- Researchers
- Policy experts
- Co-production experts
- Single practitioners (eg specialist H/V)
- And more...





Map of parent-infant teams and services

[MAP OF PARENT-INFANT TEAMS AND SERVICES](#)







Discussion at tables

- Where and who are you on the journey?
- What are your challenges?
- Back in main group for 2.15pm

