



# RECRUITING PERINATAL MENTAL HEALTHCARE WORKERS!

## Views and Experiences of Parent-Infant Relationship Assessment in Perinatal Mental Health Settings

### WHAT IS THIS RESEARCH ABOUT?

This study aims to explore the views and experiences of clinicians in conducting parent-infant relationship assessments, whilst working in a setting that provides mental health support to birthing people during the perinatal period.

It is being conducted as part of a doctoral thesis in Clinical Psychology at the University of East Anglia.

### WHO CAN TAKE PART?

Staff members from any discipline who currently support women and birthing people with mental health difficulties in the perinatal period.

For example, you might work in a Perinatal Mental Health Service, Mother and Baby Unit, or Parent-Infant Service.

### WHAT NEXT?

If you would like to find out more, please follow the link below or scan the QR code to the right:

<https://app.onlinesurveys.jisc.ac.uk/s/uea/p-i-relationship-ax>



### WHY PARTICIPATE?

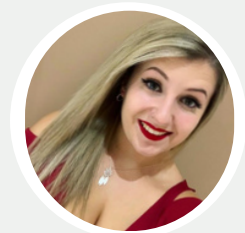
You may contribute to recommendations on how to support psychological assessment and formulation of parent-infant relationship difficulties in multidisciplinary teams.

There will be the opportunity for you to enter into a prize draw to win a £20 Amazon voucher upon completion as a thank you for your participation.

### WHAT WILL I HAVE TO DO?

You will be invited to complete an online survey, completing a series of multiple-choice and open-ended questions.

It should take no longer than 15-20 minutes to complete.



**LAUREN REMZI**

Trainee Clinical Psychologist

[L.Remzi@uea.ac.uk](mailto:L.Remzi@uea.ac.uk)